



Giving Kolkata new directions



**“If You Can Dream It, You Can Do It”**

*- Walt Disney*



## **Message from the Managing Director**

A journey started more than a decade ago and success for us have never been an only dream. It has always been a distinct reality and once one milestone is achieved, there is always another one waiting to be crossed. It is with this belief that we started SHIVOM REALTY in 2006. But like every entrepreneur sticks to their dream, we always wanted to push our organization to more prosperous milestones. More than anything, we always perceived our “Team” as a unit that could make a difference.

We recognize that the ability to excel is to competitively meet our customers’ needs. Hence our earnest endeavour is to convert peoples’ hopes of a happy home into a concrete reality that heralds the way for society and a space dedicated to celebrating life.

An intrinsic part of the SHIVOM Realty philosophy is ‘*Quality Living in Style*’ an idea that has evolved and gathered momentum with each new construction. Every new property aims to create a balanced, urban environment that allows you to breathe, walk, pause, reflect, enjoy and dream as well as make enduring acquaintances. In this way, a new eminent community is born. AND this thoroughly depends on the integrity, knowledge, imagination, skill, diversity and teamwork, and we value these qualities most extensively.

A handwritten signature in black ink, appearing to read 'Sameer', with a stylized flourish underneath.

**Sameer Agarwal**

Managing Director





**SHIVOM**  
REALTY

Building new realties city wide

From **Ballygunge** to **Barasat**;  
**Picnic Gardens** to **Patuli**;  
**Tollygunge** to **Rajarhat**;  
**Sealdah** to **Sonarpur**;  
**Kasba** to **Madurdaha**;  
**Sovabazar** to **Garia**  
via **EM Bypass** you'll find  
the Shivom touch

Changing Kolkata's skyline with trendy,  
modern, living complexes.







Our philosophy encompasses a 360°  
perspective to construction

S

**SKYLINE**  
Kolkata

H

**HOMES**  
with a heart

I

**INNOVATE**  
every day

V

**VISION**  
to the future

O

**OASIS**  
of calm

M

**MAXIMISE**  
nature







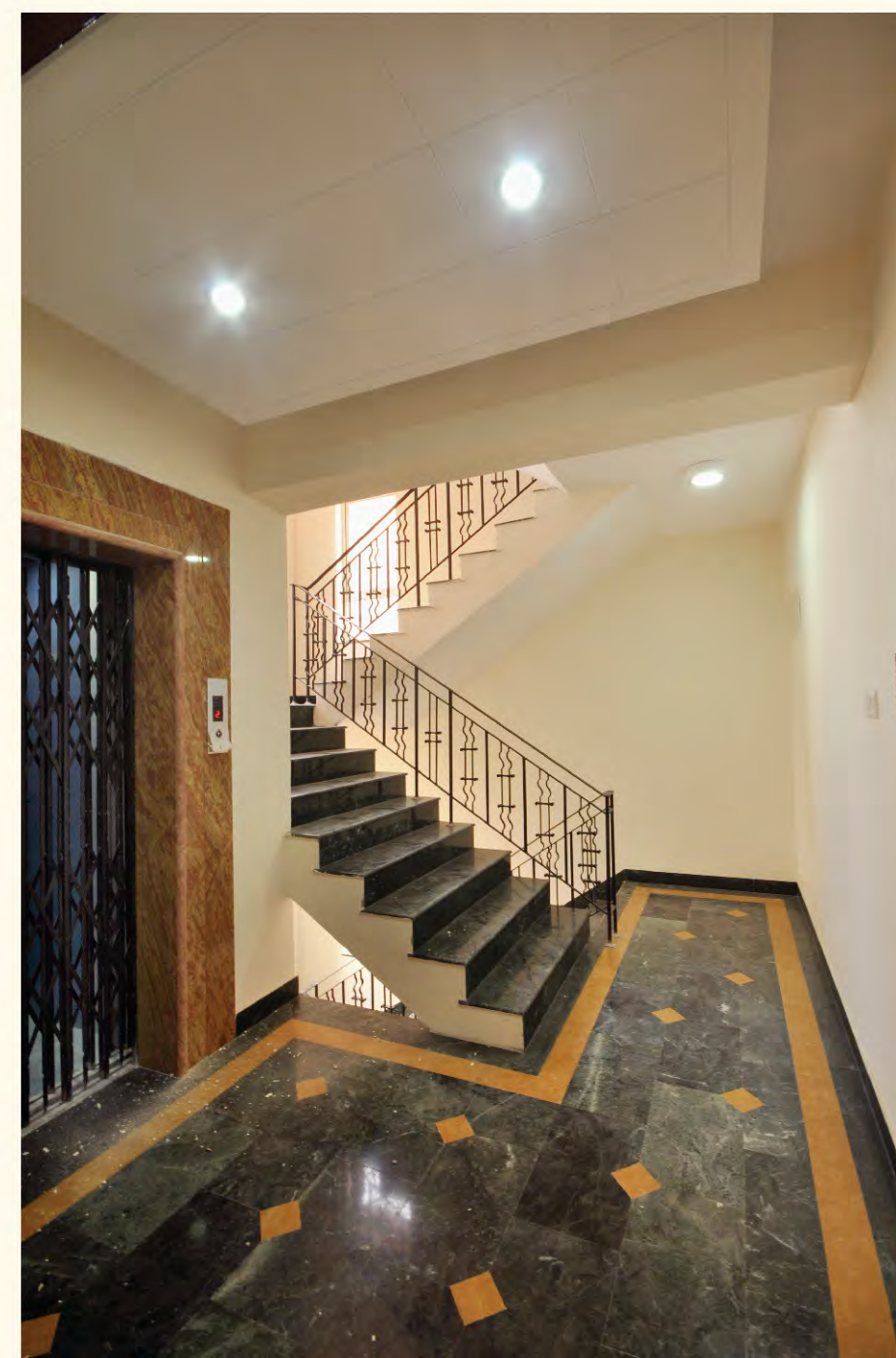
## Pushkar

Located in New Ballygunge, the spirit and legend of Pushkar is the inspiration for this construction. The strength of harmony in relationships which has stood the test of time.



## Shivam

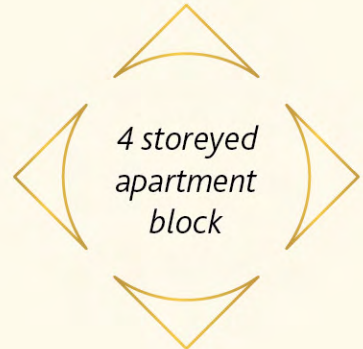
Situated off EM Bypass (Patuli Connector). Easily accessible, well-connected, Shivam is conveniently priced and comfortably built. Where you stay is a statement of how you live.





Maniam

4 storeyed apartment block,  
in the heart of the city,  
on Garcha Road, Ballygunge.  
A boutique building with spacious  
luxury apartments finished  
with exclusive imported materials.



Love begins by taking care of the  
closest ones—the ones at home

Mother Teresa

ON THE ANVIL

Upcoming projects  
Our expertise will now extend to the traditional  
areas of North Kolkata and the outskirts.  
**Barasat, Shovabazaar, Madurdaha**







## Mani Residency

Located off EM Bypass, between Ruby and Science City. An imposing tower, built in sync with today's changing skyline. Mani Residency is about "modern urban lifestyle" supported by state-of-the-art amenities. Your dream home is now a reality.





# Tiru Shivam

Live a modern life balanced by the charm of tradition in this contemporary structure, located in the heart of Kolkata. A residential building with 33 well appointed apartments.



G+12  
33 apartments





G+12 with  
2 apartments  
per floor



  
SHIVAM  
AQUILA

**Modern abodes off  
the EM Bypass—Shivam Aquila**  
The tasteful architectural  
attributes are imbued with  
an intrinsic elegance that instantly  
attracts, endears and impresses.  
The towers sharp, aquiline features  
reflect a pedigree of living milieus  
and esoteric spaces.

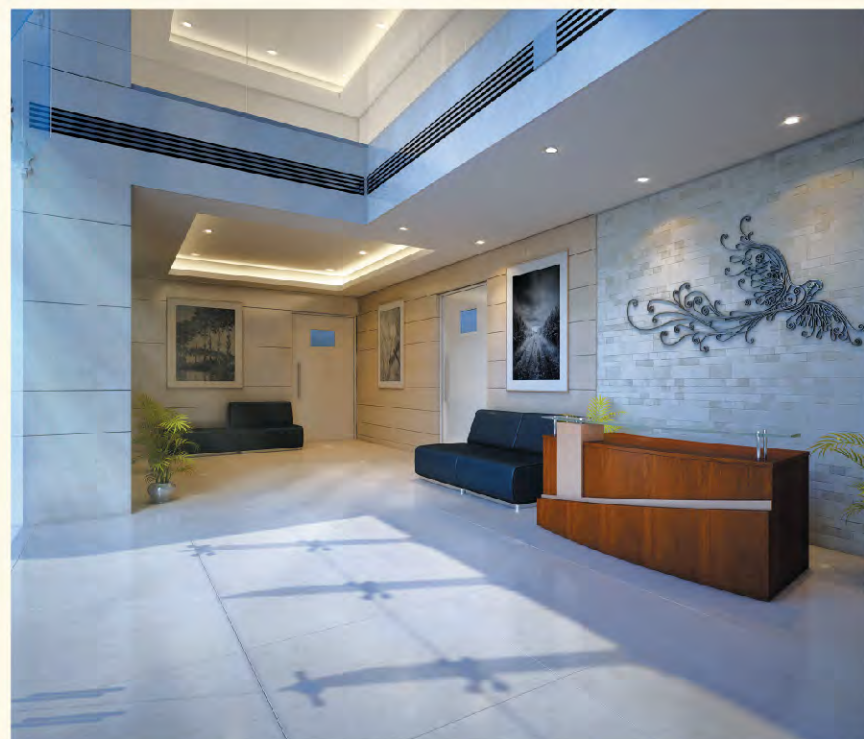






**Sky high living for the starry eyed—Shivam Astera**

This residential tower is yet another glittering star in Shivam's prestigious galaxy of projects. A hidden oasis of other worldly luxury, sheltered from the maddening traffic of inner-city life. It's where you'll find peace, warmth and happiness.







Located in Tollygunge with excellent connectivity—Shankh Mani


A serene haven of supreme repose, where you and your family can enjoy the lifestyles you've always wanted. A perfect combination of convenience and luxury with terraced flats, man-made waterbody and landscaped promenade.







Architecture should  
speak of its time and place,  
but yearn for timelessness.

 Frank Gehry







# MANI CASA

## High living in a smart city—Mani Casa

A residence of serene comfort on a 13 acre plot. Upscale residences complemented by a luxurious club, high street retail and office spaces. Well connected to both Kolkata and Howrah.







An intrinsic part of the Shivom Realty philosophy embodies vibrancy in bringing people together for the celebration of better living.

## SHIVOM PROJECT PORTFOLIO







Tranquil living  
above the  
busy streets

Artist's Impression



Maple  
SOVABAZAR

Space meets sophistication at Sovabazar







## UTOPIA

NATURALLY BEAUTIFUL LIFE

Located in Madurdaha—splendid elements of urbane living—Utopia

Built on 200 cottahs, these 4 towers featuring 3 sides open flats that are almost entirely south-east facing, are simply a paradise of convenience and luxury. Attached terraces offer views that are a sheer delight at any time of the day.







Creating a new legacy with our  
upcoming statement projects:



Unbelievably amenity rich apartments at Ramchandrapur



Commercial spaces & apartments with panoramic views at Rajpur



SRIMANI HAAT

A modern market with a vintage appeal at M. G. Road

“Timing, perseverance,  
and ten years of trying  
will eventually make  
you look like an  
overnight success.”

- Biz Stone



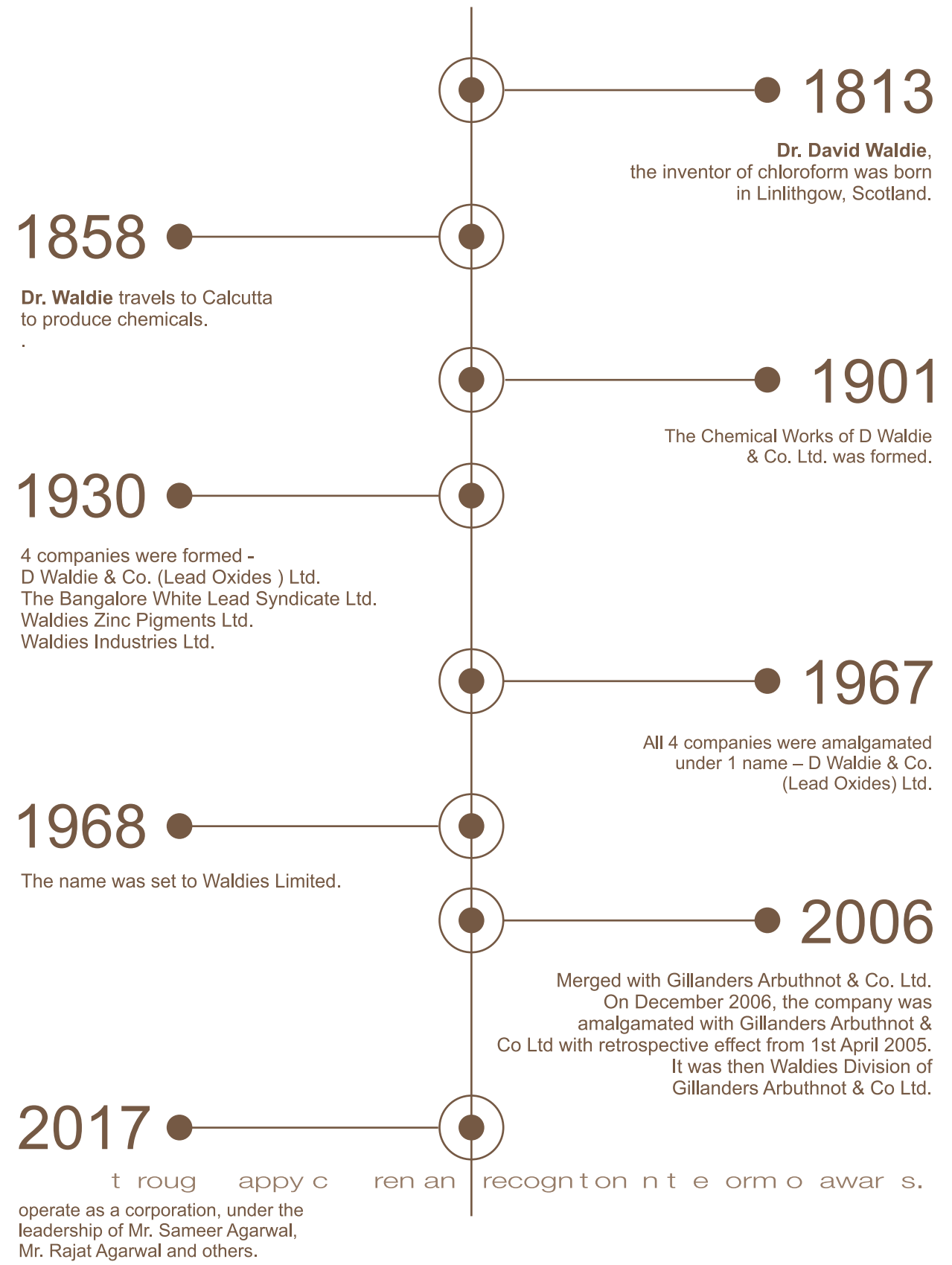


Giving wings to children



**MONTESSORI & ACTIVITY CENTRE**

A timeline of our success..





The image features a torn paper effect where a desert landscape is revealed through a jagged, white cutout shape on a solid brown background. The landscape includes a two-lane road stretching into the distance, flanked by arid terrain and leading towards a bright, hazy horizon. The title 'THE BEGINNING' is printed in a large, brown, serif font across the upper portion of the revealed scene.

# THE BEGINNING

Coming together  
is a beginning,  
keeping together  
is progress,  
working together  
is success.

*- Edward Hale.*